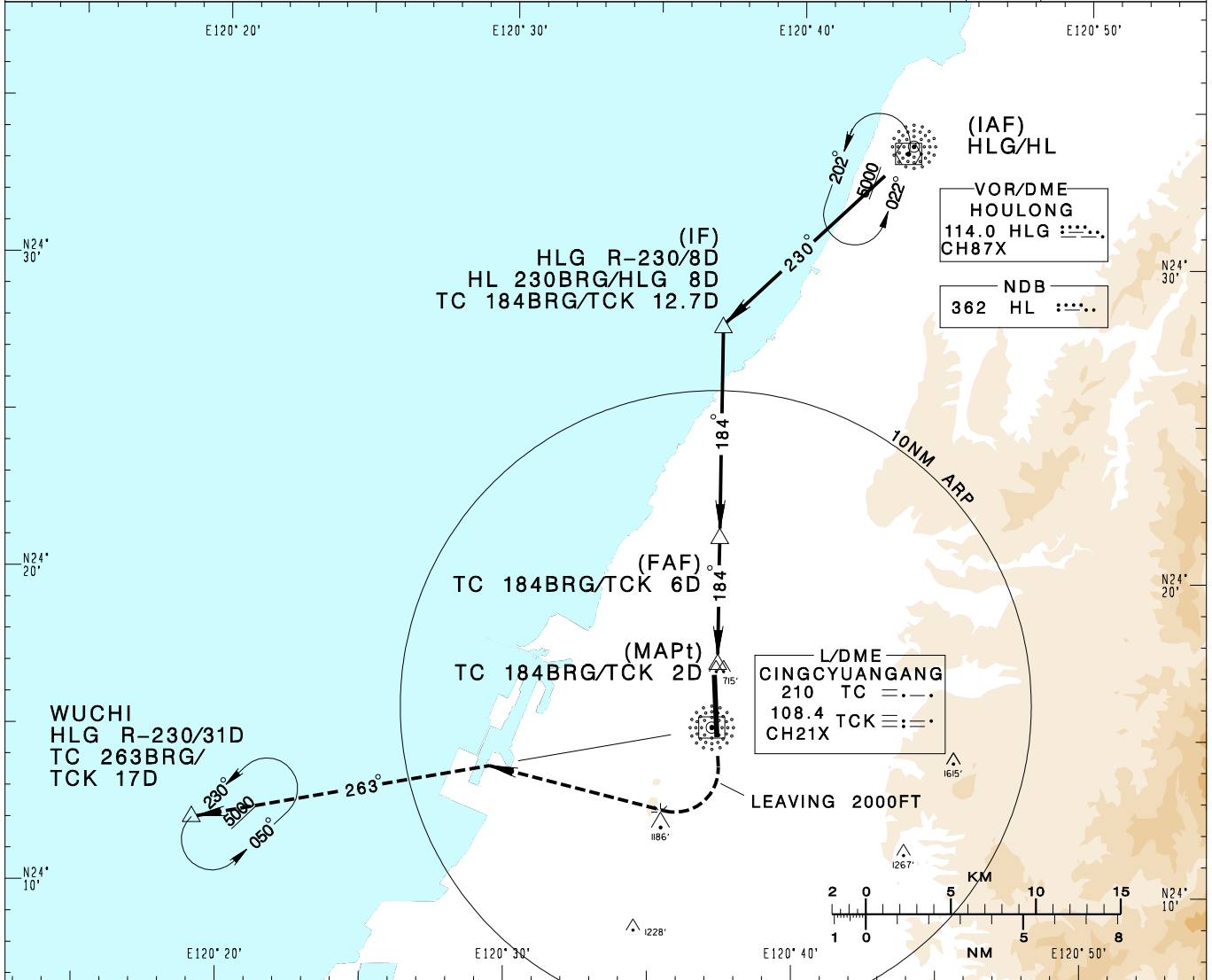


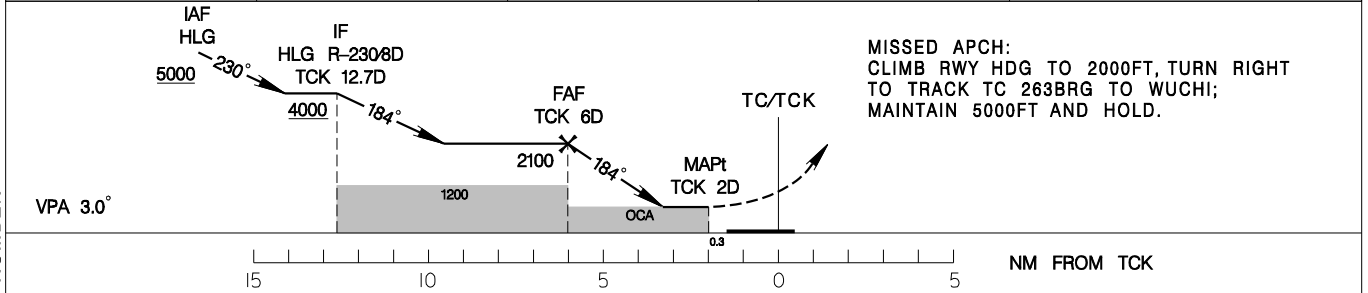
臺中/清泉崗機場 TAICHUNG/CINGCYUANGANG AD

RCMQ
NDB RWY18

TAIPEI APP 130.1 129.6	TAICHUNG TWR 118.75 120.25	ATIS 127.75	<p>VAR 4° W</p> <p>MSA TC 25NM</p>		
Apt Elev: 665'		Rwy18 THR Elev: 653'		Trans Level: FL130	Trans Alt: 11,000'
BEARINGS ARE MAGNETIC; DISTANCES ARE NAUTICAL MILES; ELEVATIONS, HEIGHTS IN FEET					



6DME	5DME	4DME	3DME	DIST to TCK
2090	1770	1450	1130	ADVISORY ALT



MINIMA (OCA IN FT, VIS IN M, OCH IN FT)					NOTE 1. CIRCLING NA EAST OF RWY. 2. TRAFFIC FROM WUCHI JOIN HLG HOLDING PATTERN FOR COURSE REVERSAL. 3. CAUTION OBSTACLES (TREES) UP TO 715FT PENETRATE THE VISUAL SEGMENT SURFACE (VSS). * DME REQUIRED
CATEGORY	A	B	C	D	
STRAIGHT IN	1100/1600 447	1100/1600 447	1100/2100 447	1100/2100 447	
CIRCLING	1360/1900 695	1360/2800 695	1600/4400 935	1600/4800 935	

CHANGES: NEW PAGE NUMBER